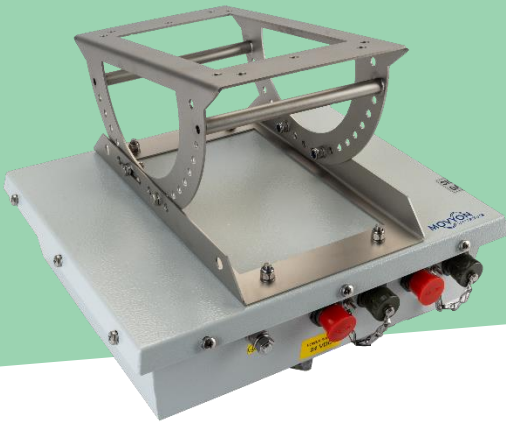


DSRC RSU



Radio frequency antenna capable of communicating with on-board equipment according to the standards: EN 15509, ETSI ES 200 674-1 and UNI 10607. This device belongs to a family of antennas capable of meeting multiple needs such as, for example, traffic monitoring, access control, toll collection, and enforcement.

TECHNICAL FEATURES

RF SECTION EN 15509

RECEIVER

- Receiver Sensitivity: < -104dBm
- Subcarrier Frequencies: 1.5 – 2 MHz
- Subcarrier Modulation: 2-PSK
- Data Coding: NRZI
- Bit Rate: 250kbps

TRANSMITTER

- Power Output: $\leq +33$ dBm EIRP
- Carrier Modulation: 2-ASK
- Data Coding: FMO
- Bit Rate: 500 kbps
- Carrier Frequencies: F1 5797.5 MHz; F2 5802.5 MHz; F3 5807.5 MHz; F4 5812.5 MHz

RF SECTION ETSI ES 200 674-1 and UNI 10607

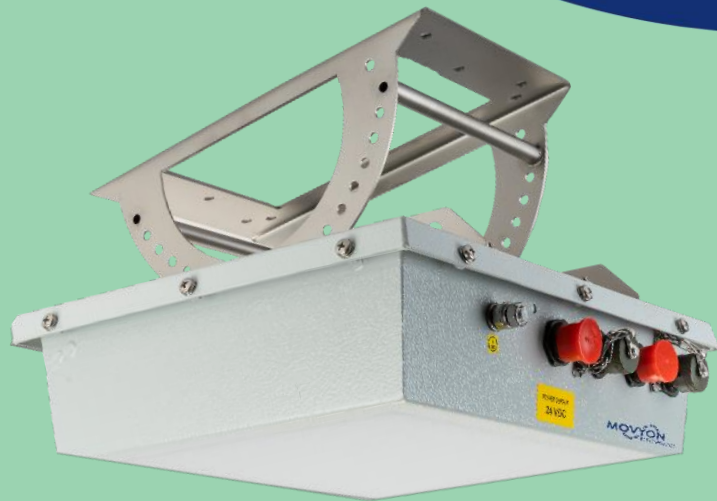
RECEIVER

- Receiver Sensitivity: < -98 dBm
- Subcarrier Frequencies: 10,7 MHz
- Subcarrier Modulation: FSK
- Data Coding: Manchester
- Bit Rate: 144 Kbps

TRANSMITTER

- Power Output: $\leq +21$ dBm
- Carrier Modulation: OOK
- Data Coding: Manchester
- Bit Rate: 921 Kbps
- Carrier Frequencies: 5,8 GHz

DSRC RSU



DIGITAL BOARD

- ⊙ CPU: Dual Core Cortex A9
- ⊙ RAM: 512 MByte
- ⊙ 8 GByte eMMC
- ⊙ EEprom: 512 KBit
- ⊙ Ethernet: 1 Gbit
- ⊙ 3 axis accelerometers
- ⊙ Silicon ID
- ⊙ 1 microSD Card
- ⊙ Temperature sensor
- ⊙ RTC + SuperCap
- ⊙ 3 configuration inputs
- ⊙ 6 LEDs

INSTALLATION

- ⊙ The unit is designed to be installed in the center of an access/exit lane
- ⊙ The installation parameters and coverage/dialogue area with the on-board equipment are different depending on the type of application and antenna model

DIMENSIONS AND SPECIFICATIONS

- ⊙ Supported power supply:
 - 230 VAC $\pm 10\%$ (< 25W)
 - PoE: IEEE 802.3 AT/BT Class 4 (48 Vdc max 20 W)
 - 24 VDC (< 20W)
- ⊙ Weight: ~5 kg
- ⊙ Degree of protection: IP65
- ⊙ Operating temperatures: -40/+55 °C
- ⊙ Storage temperatures: -40/+70 °C

KEY FEATURES

- ⊙ DSRC Standard.
- ⊙ Linux Operating System.
- ⊙ Full transaction management
- ⊙ Ability to operate in transparent mode.
- ⊙ Contains no moving parts.
- ⊙ High speed of replacement